

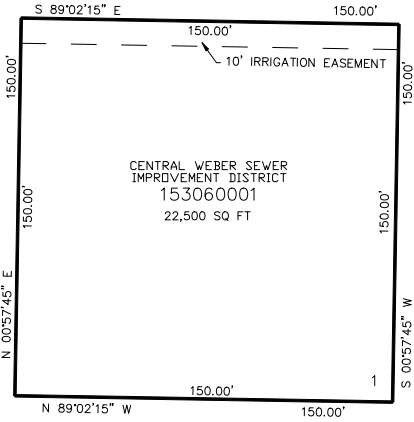
PART OF THE SW.1\4, OF SECTION 29, T.6N., R.2W., S.L.B. & M.  
WEST HAVEN LIFT STATION SUBDIVISION

IN WEBER COUNTY  
SCALE 1" = 40'

TAXING UNIT: 516

SEE PAGE 79-2

SEE PAGE 79-2



SEE PAGE 79-2

SEE PAGE 79-2

FOR COMPLETE ENG DATA SEE  
ORIGINAL DEDICATION PLAT IN  
BOOK 54, PAGE 39 OF RECORDS.